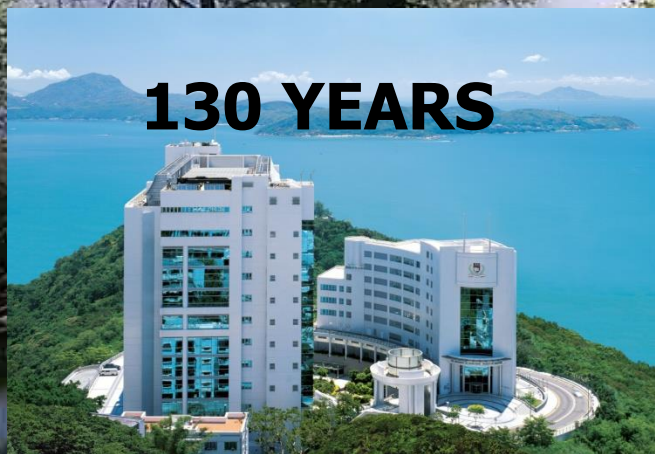




130 YEARS



In memory of Professor LC Chan





Student support

Looking back, Looking forward

N.G. Patil MBE

MBBS, MS, FRCS Ed, FCHK, FKHAM(Surgery)

Hon. Clinical Professor in Surgery

The University of Hong Kong

Preamble



Getting into Medical School

What students look for?

- Admission criteria
- Track record
- Pass rate
- **Student support**
- Assessment
- Faculty staff
- Career prospects at home & abroad
- Attrition Rate (dropout/forced out)



Counseling/Student Support

(Student questionnaire : AAMC)

- **What kind of counseling available to students?**
- **Is there a mentor/advisor system?**
- **How diverse is the student body?**



Student Involvement

(Student questionnaire : AAMC)

- What medical school committees (e.g., curriculum committee) have **student representation**?
- Are students involved in (required or voluntary) **community service**?
- How active is the **Student Council/Government**? Are there other student organizations?



Student Evaluation of Medical School (AAMC)

- Attrition Rate
- Basic Sciences teaching
- Contacts
- **Helpful Advising**
- Clinical Preparation
- **Level of Burnout**
- Knowledge Level
- **Helpful Doctors**
- Patient Interaction
- Teaching Style
- **Job Assistance**
- Teaching
- **Individual Value**
- Social Life
- Extracurricular
- Surrounding City
- Meeting People
- Romance
- Overall satisfaction
- Overall quality of school



What is a good medical school?

Acknowledgement : Sam Leinster

Ethical practice

Inter-professional co-operation

Continuing professional development

• A
recog
respond to social,
emotional and
spiritual needs of
end users

... by
comp
rs with
al attitu

- Clinical skills
- Communication skills
- Generic skills



Medical faculty student profile

- Computer literate
- Social media users
- Online access to enormous material
- Students' online assemblies
- Dr. Google





We live in digital age



Memorization is
outsourced to
technology



Etiology of frustrations

“Tomorrow’s health professionals are taught by today’s teachers with yesterday’s curriculum”

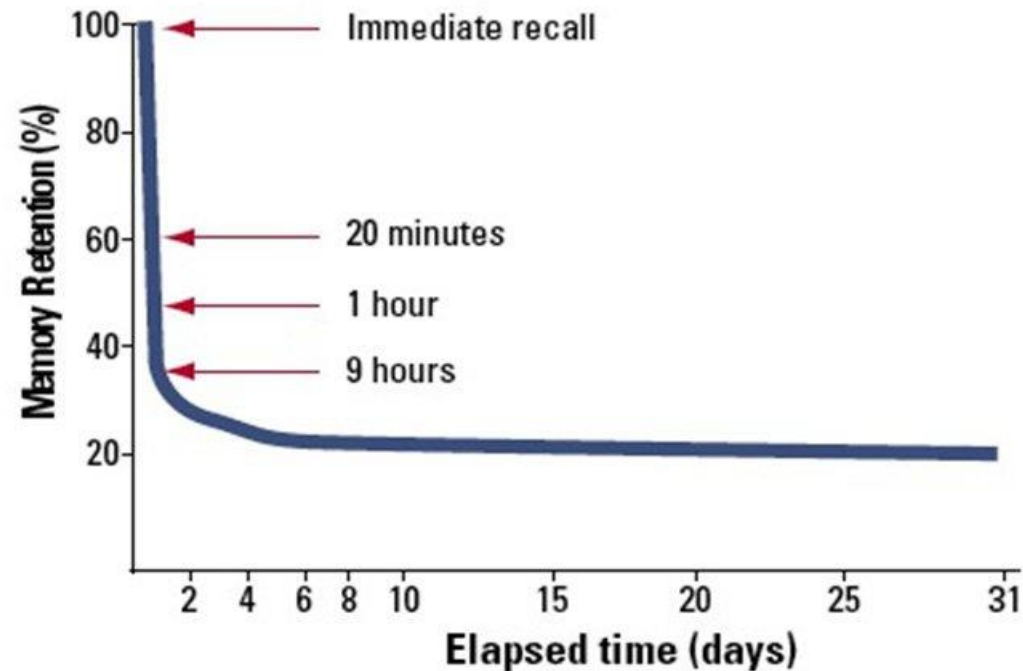


Etiology of frustrations

- *“Students can cope with bad teaching but they cannot cope with bad assessment”*
(modified from Boud, 1995)



Lectures galore : Forgetting curve



1993

Case scenario

- I met a student distraught and crying following meeting with faculty review committee (FRC) for his/her poor performance. Student described scenario as firing squad surrounding the victim for execution

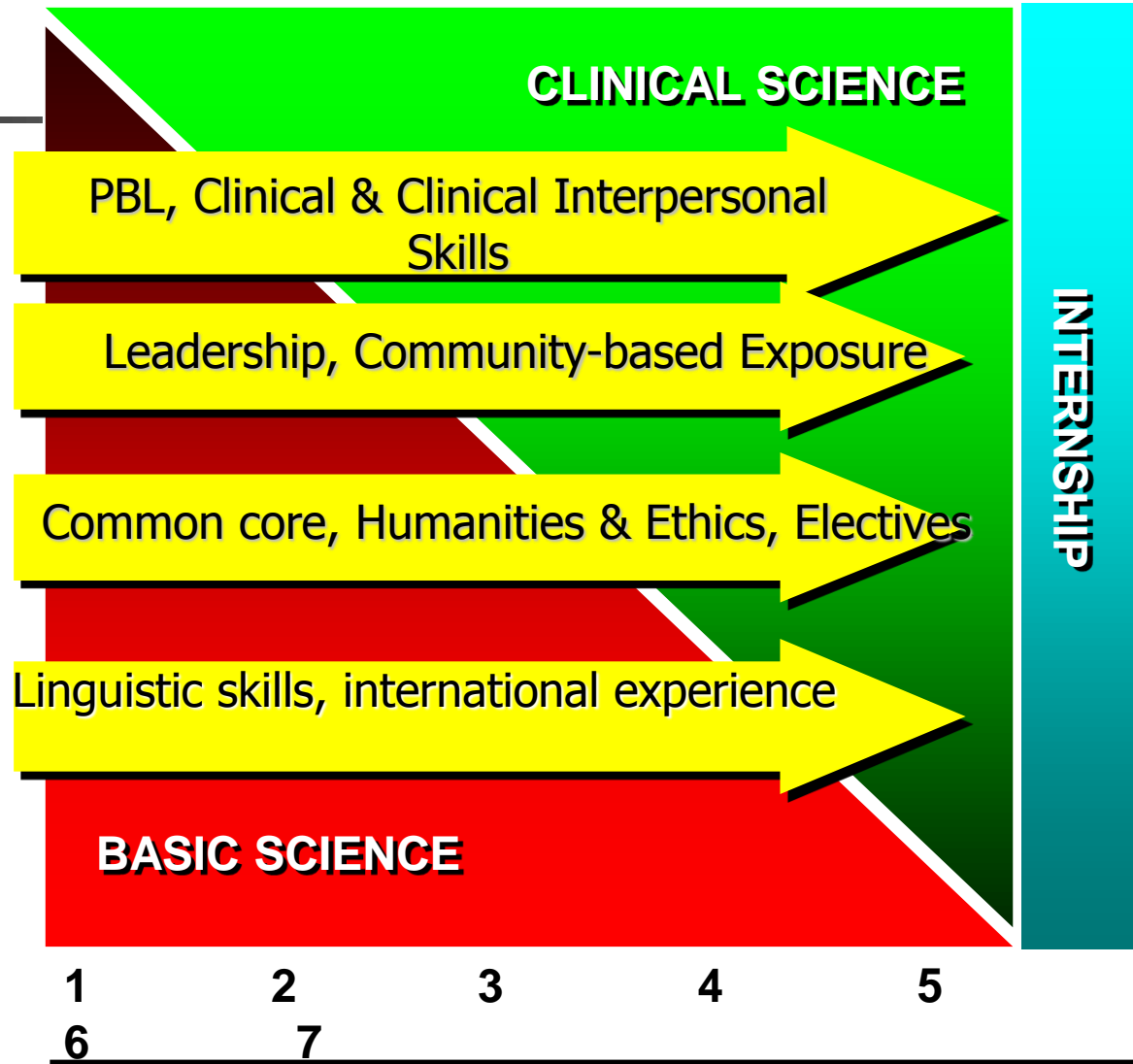




Student support till 1997

- Student matters mainly dealt at the departments and reported to the faculty as when -----
- Interns were counselled by SPMET
- Students' organizations provided some peer support
- Medical education unit established in 1998 with curriculum reforms

1997 : Curriculum reform



2004 : IMHSE

2015 : BIMHSE

- Medical education unit became Institute of Medical and Health Sciences Education (IMHSE) to promote excellence, professionalism, innovation and collaboration (EPIC) in medical and health sciences education





IMHSE

Institute of Medical and Health Sciences Education

Curriculum Reform:
Foundation to Consolidation

Programme for Effective Transition and Student Support (PETSS)

- To build a philosophy of excellence, leadership and professionalism amongst students
- Focus on enhancing personal wellness including personal, occupational, environmental, spiritual, emotional, intellectual and social development of their intellectual and personal strengths



Support needed

(I have met 400 + students & interns over 20 years at HKU)

- Academic matters
- Financial difficulties
- Stress & Depression
- Never failed syndrome
- Discontinuation
- Work related issues
- Behavioral problems

Student input at the faculty level

- Staff student consultative meeting
- E-forum
- Face to face
- Power points provided prior to lecture
- Post exam feedback e.g. after OSCE
- Curriculum map : redundant lecture & lecture topics
- Surveys including quantitative & qualitative comments



HKU initiative

- BIMHSE (Bau Institute of Medical & Health Sciences Education)
- PETSS (Program for Effective Transition & Student Support)
- CEDAR (Centre of Development and Resources for Students)
- AAO (Academic Advising Office)
- Centre for Medical Humanity & Ethics
- Students representation on faculty board
- SSM (Staff – Student Consultative meetings)
- Survey of teaching and clerkships
- Reflective logbooks
- E-forums
- Student associations
- Fitness to practice committee



Student
 **Voice**



The Art and Science of Medicine

**An introduction to *Medical Humanities Program*:
Fostering development of humanistic values in medical practice**



Professor CHAN Li-Chong
Department of Pathology,
and

Medical Ethics and Humanities Unit
The Li Ka Shing Faculty of Medicine
The University of Hong Kong



Medicine and medical practice in the real world



Feel good about:

- New discoveries
- Cutting edge technology
- Learning new skills
- Save more lives
- Finding new cures
- Helping humankind

- Earn \$\$\$
- High status

HELPING OTHERS AND OURSELVES

Worry about:

- Difficult, angry patients
- Not meeting patients expectations
- Making mistakes
- Being blamed
- Not able to help – dying patients, incurable patients
- To much to learn (exams!!)
- To much to do (excessive work hours)
- Burnout (self harm)

LETTING DOWN OTHERS AND OURSELVES

Becoming a better doctor – learning to deal with

Difficult, angry patients (and their suffering)

Not meeting patients expectations

(Fear of) making mistakes

(Fear of) being blamed

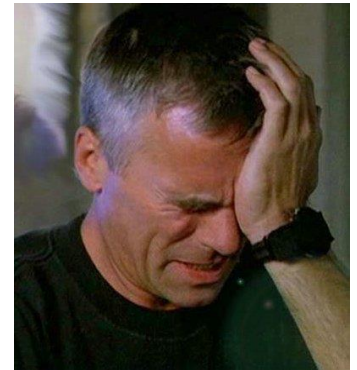
Not able to help – dying patients, incurable patients

To much to learn

To much to do (excessive work hours)

Burnout (self harm)

How can the medical curriculum help?



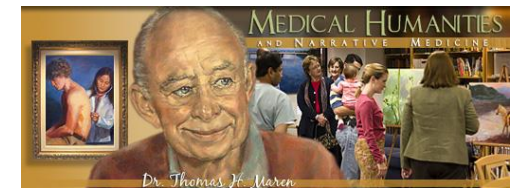
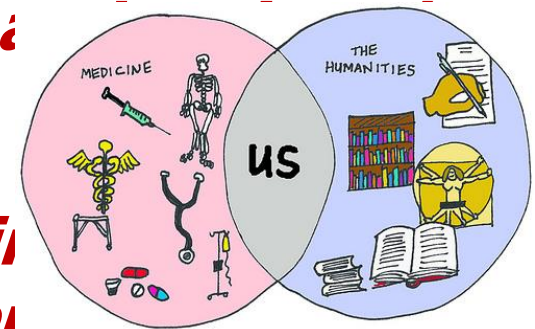
Medical Humanities (From 2012 – core curriculum)

Four Themes

- ***Narrative Medicine: Doctors' stories***
- ***History of Medicine***
- ***Culture, spirituality and healing***
- ***Death, Dying and Bereavement***
- ***Humanitarianism***

Teaching and Learning Format:

- ***Literature***
- ***Films***
- ***Visual Arts – paintings, sculptures, multimedia***
- ***Performances – music, drama***





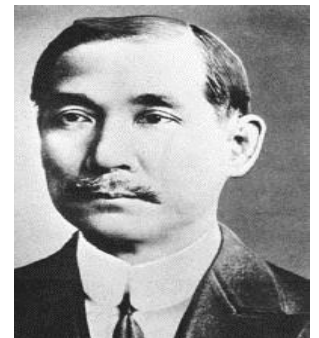
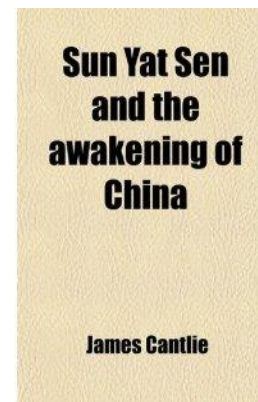
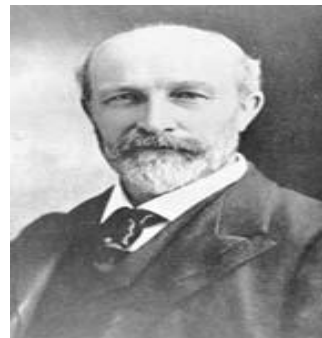
What makes a good

Mentorship programme?



Mentor & Mentorship

- A mentor is defined as a trusted counselor or guide
- Mentorship is transfer of wisdom from a wise and trusted counselor to mentee/protégé



Mentorship programme



- **Informal**

When a person approaches a possible mentor and that person agrees to form a mentoring relationship.

- **Formal**

Organization oversees and guides the mentoring program in order to promote student/trainee/employer development

Buell, 2004

Mentor phenotypes

Good mentor

- Approachable
- patient
- good role model

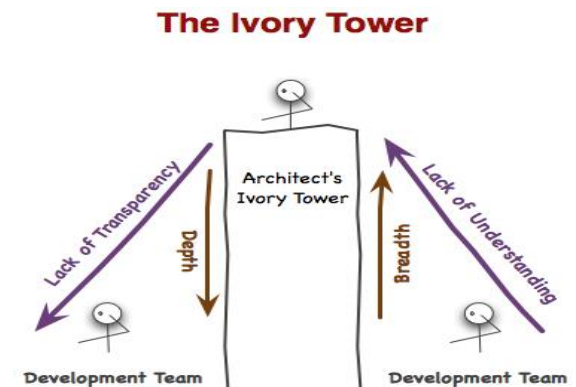
Poor mentor

- distant



Why medical faculties need mentorship programme?

- Medicine is a high stake education
- Bright high school graduates may not be able to cope with 'failures' in medical school
- Awareness of life beyond medicine
- Career guidance
- Assistance in special needs





Candy Ip Hong Ting

Thanks to the exposures I received and the support of Anne, I have had so many unique experiences and gained essential personal connections...I reached my original aim of joining the Programme: To understand what kinds of jobs would be suitable for m...

HKU Centenary Marathon Team 2012

2012-02-05



Life-long Mentee Group



The Best Mentor



Passion for Science Research



Mutual Learning

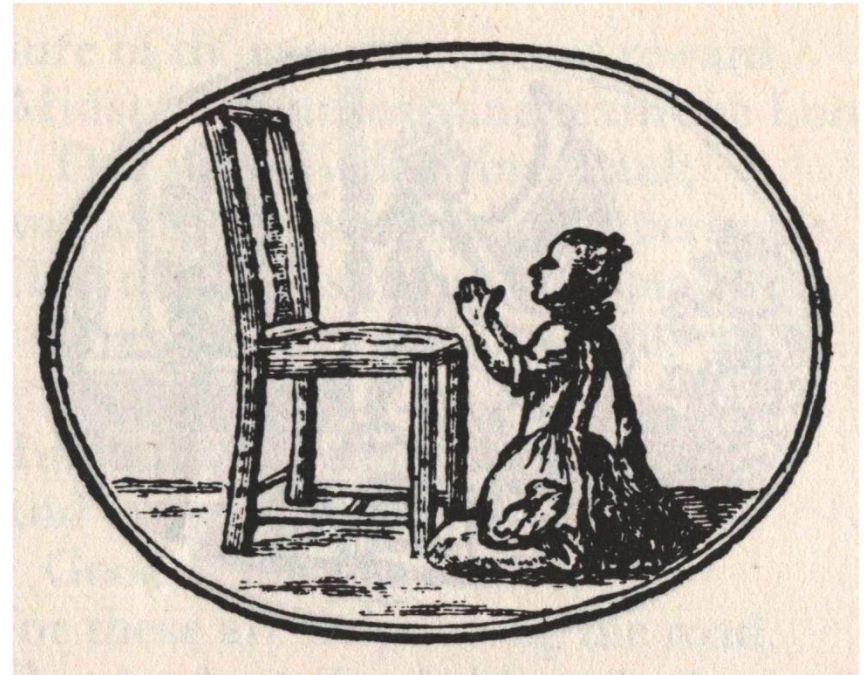
A half-hour television programme featuring the Vice-Chancellor, professors, alumni, students and supporters, all saying thank you to the community will be re-run on Christmas day on December 25 (Sunday), 3:30pm TVB Jade).

> more stories

> more

Failure of mentorship programme

- Inadequate resources
- Program managers have no commitment
- Mission and goals are not clearly defined
- Lack of networking
- Superficial contact with mentors and mentees
- No specific guidelines





Reality check : Lessons learnt

- Those who need to be there, may not attend workshop
- Those who need support may not seek help
- Role models may not act as role model
- Students reluctance to obtain help at faculty and HA hospitals in fear of entry into CMS and humiliation

So-----

- Be proactive not knee jerky!
- Listen to students
- Provide staff development program in student support, feedback & counselling



Student support

- Cure sometimes
- Care often
- Comfort always!



Thank you LC !





Getting to terms

Humane –

- Sympathy or consideration for others; compassionate; benevolent. Related to Humane: ***kindness; benevolence.***

Humanity

- Related to Human: the quality, ***condition or fact of being human;*** the human race

The humanities: learning or literature concerned with human culture (historically: the branch of knowledge that deals with the Latin and Greek classics).

Humanitarian

- a person practising humane action; ***a person believing in advancement of welfare of others***



Definitions: The New Shorter Oxford Dictionary

